

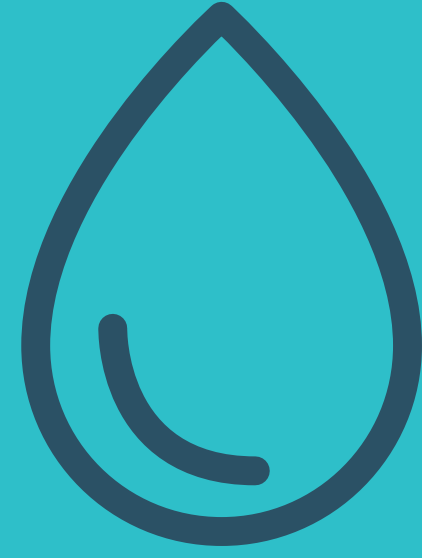
NATURAL OUR WATER. OUR FUTURE COURSE

INTEGRATED CATCHMENT APPROACH

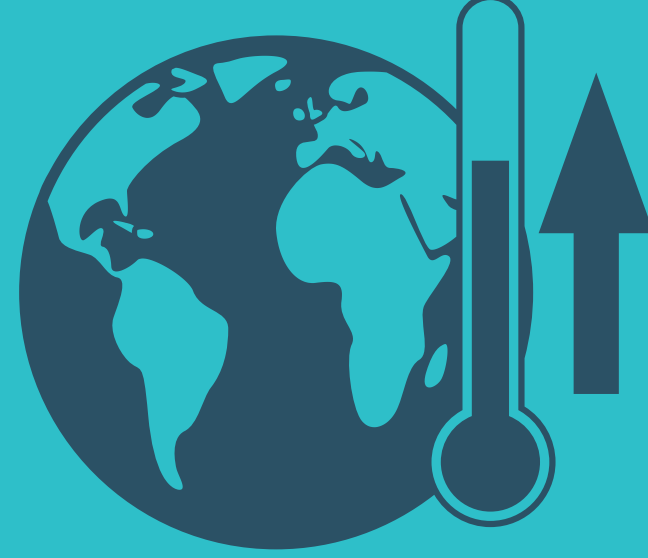
Enabled by the LIFE IP Natural Course Project



TOTEX



WFD



Climate change



Flood resilience



Priority substances



Water resource resilience

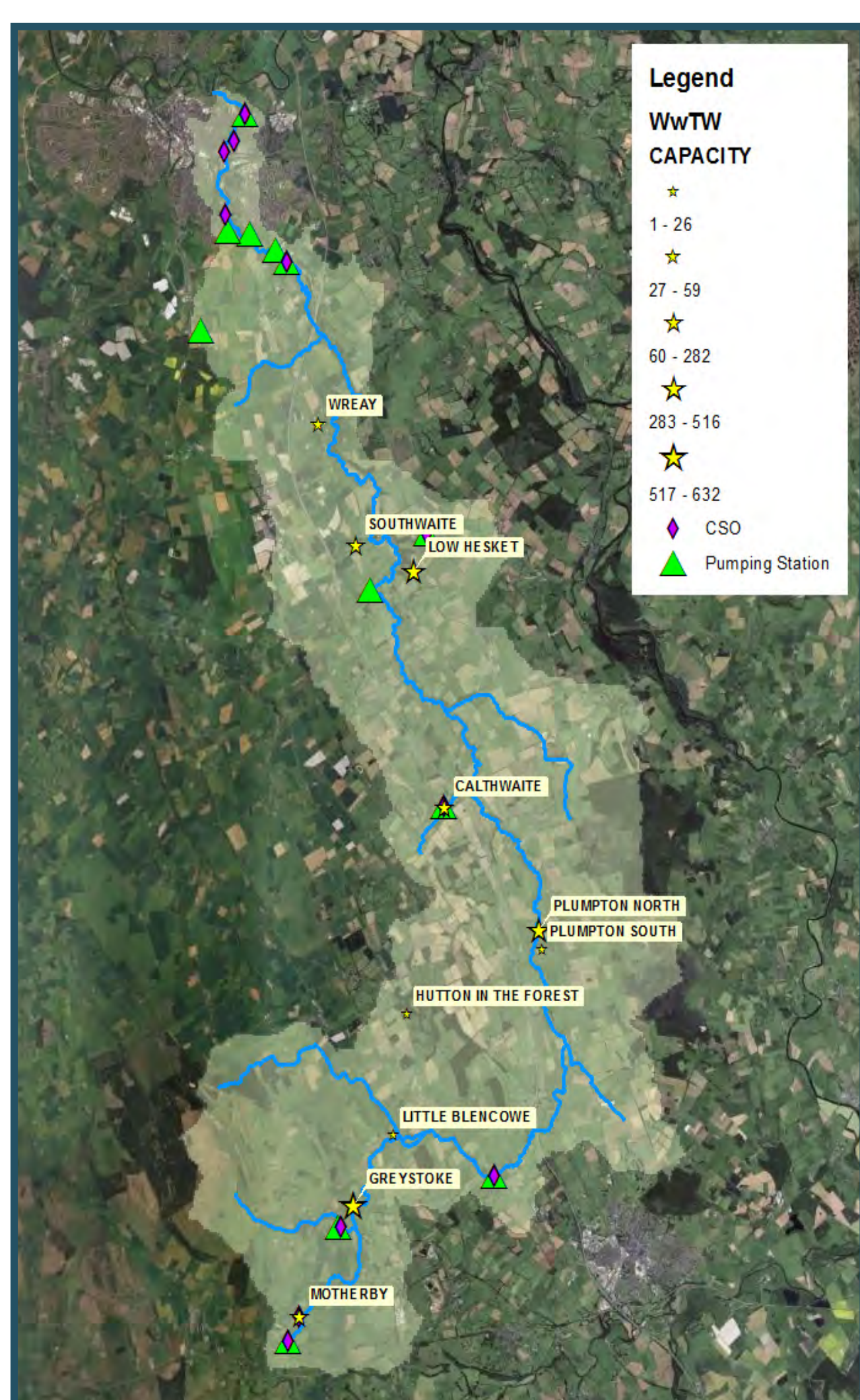
Why an integrated catchment strategy?

- To drive affordable, evidence-based solutions for customers
- To enable holistic synergies between water quality and flooding
- To deliver multiple benefits, such as: water quality improvements, flood risk management, social benefits, resilience, to the environment and communities
- To reduce uncertainties around catchment management
- To promote natural capital and environmental stewardships
- To develop collaborative working
- To drive innovation



The Petteril Project *"A truly integrated approach"*

May 2015 - 2020



- Catchment-wide investigations to build a better understanding of nutrients in the River Petteril
- Develop evidence-based solutions and targeted investment: asset + non-assets; waste + drinking water; process + network
- Development of sustainable and innovative asset solutions for phosphorus (P) removal in rural WwTWs
- Exploring catchment interventions that deliver multiple benefits to: drinking & wastewater quality and flooding
- Collaborative, partnership working
- Development of a tool to measure natural capital accounting at sub-catchment level

